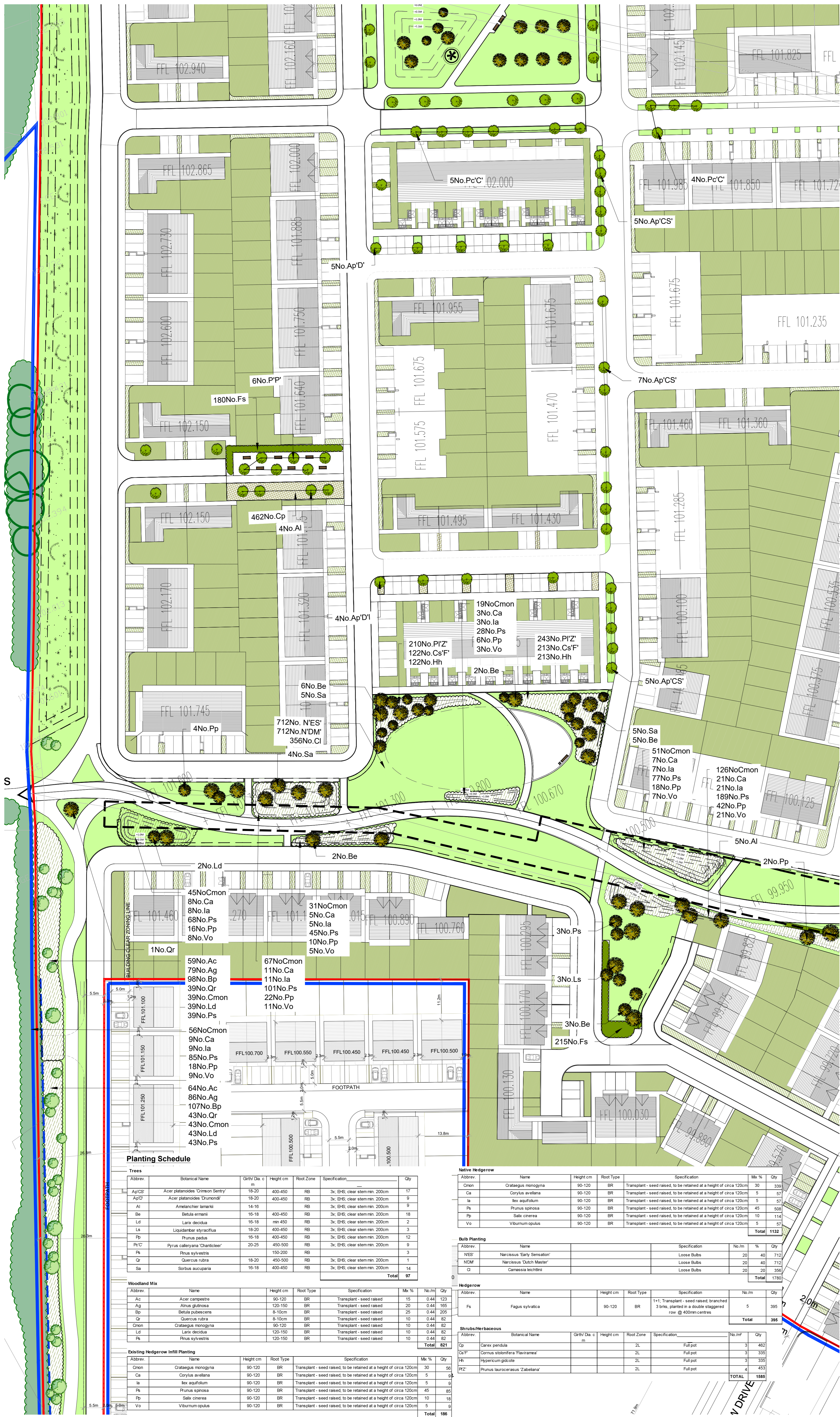


Note

- Legend**
- Site Boundary
 - Proposed amenity grass areas with public ownership and to public open space: grass seed sown on 150mm clean topsoil (imported if necessary), over 250mm subsoil, all subsoil to be punctured and consolidated to aid natural drainage.
 - Grass areas within private ownership.
 - Proposed shrub planting areas within public open space, positioned within 450mm clean topsoil (imported if necessary) to areas shown.
 - Proposed compensatory woodland and Native Infill hedgerow to areas shown.
 - Existing Hedgerow to be retained or infilled as necessary with similar species where possible (i.e. under the applicants ownership).
 - Proposed meadow area.
 - Proposed naturalised bulb planting.
 - Proposed hedgerow to areas shown.
 - Proposed open space tree planting - specimen species.
 - Proposed tree planting.
 - Existing Tree planting to be retained.
 - Stormtech Attenuation System and extent of swale areas. Refer to Engineers Drawing for details.



Planting Schedule

Abbrev.	Botanical Name	Girth/ Dia. c m	Height cm	Root Zone	Specification	Qty
Ap/CS	Acer platanoides 'Ormon Sentry'	18-20	400-450	RB	3x; EHS; clear stem min. 200cm	17
Ap/D	Acer platanoides 'Drumond'	18-20	400-450	RB	3x; EHS; clear stem min. 200cm	9
Al	Amelanchier lamarckii	14-16		RB	3x; EHS; clear stem min. 200cm	9
Be	Betula ermanii	15-18	400-450	RB	3x; EHS; clear stem min. 200cm	18
Ld	Larix decidua	15-18	min 450	RB	3x; EHS; clear stem min. 200cm	2
Ls	Liquidambar styraciflua	18-20	400-450	RB	3x; EHS; clear stem min. 200cm	3
Pp	Prunus padus	16-18	400-450	RB	3x; EHS; clear stem min. 200cm	12
Pc/C	Pyrus calleryana 'Charcticier'	20-25	450-500	RB	3x; EHS; clear stem min. 200cm	9
Ps	Pinus sylvestris		150-200	RB		3
Qr	Quercus rubra	18-20	450-500	RB	3x; EHS; clear stem min. 200cm	1
Sa	Sorbus aucuparia	16-18	400-450	RB	3x; EHS; clear stem min. 200cm	14
Total						97

Abbrev.	Name	Height cm	Root Type	Specification	Mix %	No./m	Qty
Ac	Acer campestre	90-120	BR	Transplant - seed raised	15	0.44	123
Ag	Alnus glutinosa	120-150	BR	Transplant - seed raised	20	0.44	165
Bp	Betula pubescens	8-10cm	BR	Transplant - seed raised	25	0.44	205
Qr	Quercus rubra	8-10cm	BR	Transplant - seed raised	10	0.44	82
Cmon	Crataegus monogyna	90-120	BR	Transplant - seed raised	10	0.44	82
Ld	Larix decidua	120-150	BR	Transplant - seed raised	10	0.44	82
Ps	Pinus sylvestris	120-150	BR	Transplant - seed raised	10	0.44	82
Total						0.82	821

Abbrev.	Name	Height cm	Root Type	Specification	Mix %	Qty
Cmon	Crataegus monogyna	90-120	BR	Transplant - seed raised, to be retained at a height of circa 120cm	30	56
Ca	Corylus avellana	90-120	BR	Transplant - seed raised, to be retained at a height of circa 120cm	5	9
la	Ilex aquifolium	90-120	BR	Transplant - seed raised, to be retained at a height of circa 120cm	5	9
Ps	Pinus spinnosa	90-120	BR	Transplant - seed raised, to be retained at a height of circa 120cm	45	85
Pp	Salix cinerea	90-120	BR	Transplant - seed raised, to be retained at a height of circa 120cm	10	18
Vo	Viburnum opulus	90-120	BR	Transplant - seed raised, to be retained at a height of circa 120cm	5	9
Total						186

Native Hedgerow

Abbrev.	Name	Height cm	Root Type	Specification	Mix %	Qty
Cmon	Crataegus monogyna	90-120	BR	Transplant - seed raised, to be retained at a height of circa 120cm	30	339
Ca	Corylus avellana	90-120	BR	Transplant - seed raised, to be retained at a height of circa 120cm	5	57
la	Ilex aquifolium	90-120	BR	Transplant - seed raised, to be retained at a height of circa 120cm	5	57
Pp	Prunus spinosa	90-120	BR	Transplant - seed raised, to be retained at a height of circa 120cm	45	508
Pp	Salix cinerea	90-120	BR	Transplant - seed raised, to be retained at a height of circa 120cm	10	114
Vo	Viburnum opulus	90-120	BR	Transplant - seed raised, to be retained at a height of circa 120cm	5	57
Total						1132

Bulb Planting

Abbrev.	Name	Specification	No./m	%	Qty
NES	Narcissus 'Early Sensation'	Loose Bubs	20	40	712
NDM	Narcissus 'Dutch Master'	Loose Bubs	20	40	712
C	Camassia leitchii	Loose Bubs	20	20	356
Total					1780

Hedgerow

Abbrev.	Name	Height cm	Root Type	Specification	No./m	Qty
Fs	Fagus sylvatica	90-120	BR	1+1; Transplant - seed raised, branched 3 brks, planted in a double staggered row @ 400mm centres	5	395
Total						395

Shrubs/Herbaceous

Abbrev.	Botanical Name	Girth/ Dia. c m	Height cm	Root Zone	Specification	No./m	Qty
Cp	Carex pendula			2L	Full pot	3	462
Co/P	Cornus stolonifera 'Flaviramea'			2L	Full pot	3	335
Hh	Hypericum glandulosum			2L	Full pot	3	335
PZ'	Prunus laurocerasus 'Zabeliana'			2L	Full pot	4	453
TOTAL						1585	

Rev. Date Note

Project name: **Dunshaughlin East SHD** Project number: **17-003**

Drawing name: **Planting Plan 3 of 4** Drawing number: **PP-04-PP**

Drawing scale @ A1: **1:500** Drawn by: **ad** Checked by: **ld**

Status: **Planning** date: **14.12.2018**

Contact details:
Linda Doyle (Director) Tel: 016087782
e-mail: linda@doyle-otroithigh.com
Daire O'Troithigh (Director) Tel: 016087782
e-mail: daire@doyle-otroithigh.com

Office address:
Pembroke House,
28-32 Upper Pembroke St.,
Dublin 2.

doyle + o'troithigh
landscape - architecture

www.doyle-otroithigh.com